



100%
MADE IN ITALY



LINDHAUS®

QUALITY CLEANING EQUIPMENT

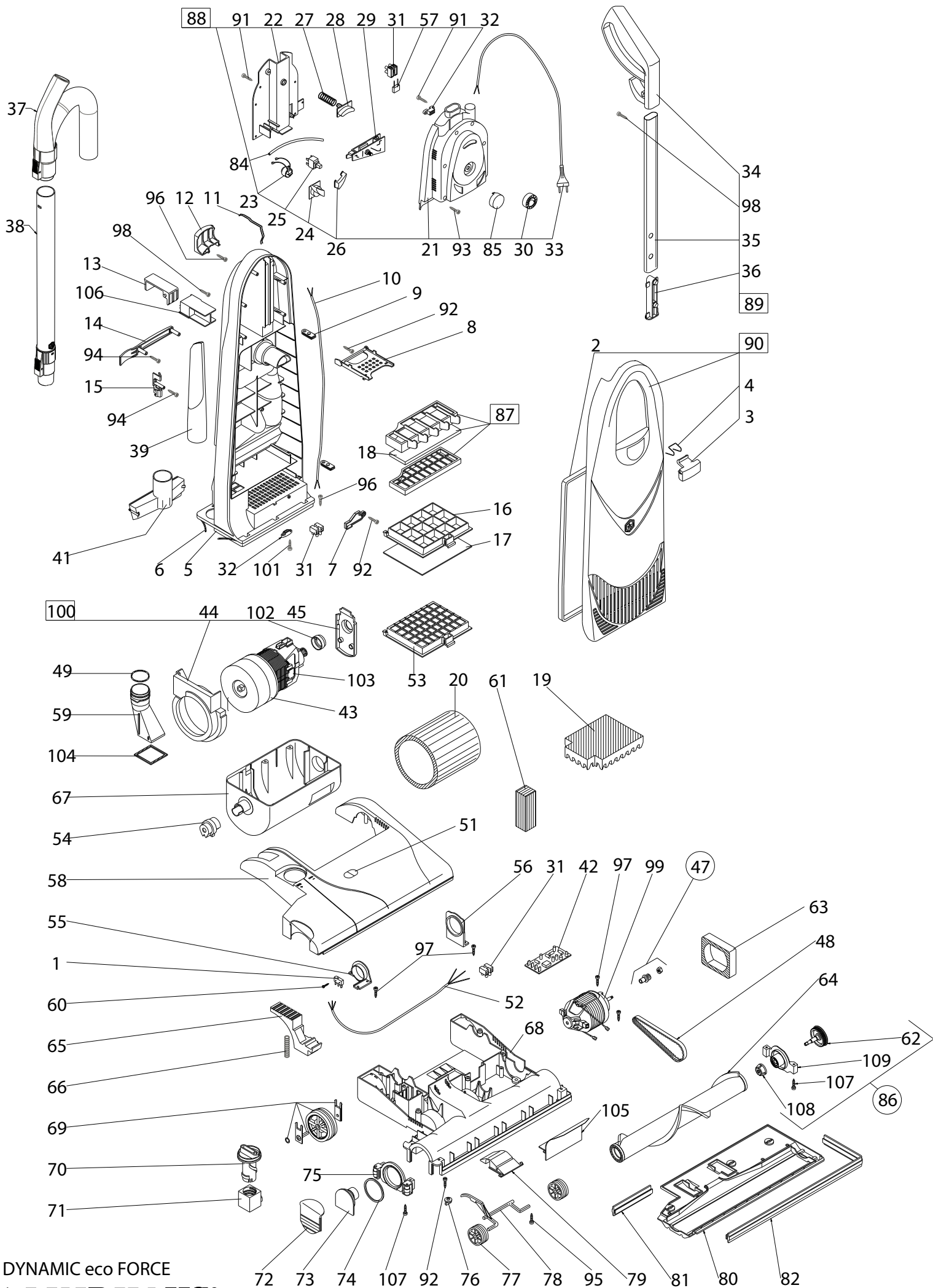
PROFESSIONAL LINE

ECO FORCE



**Dynamic eco FORCE
300e/380e/450e
SPARE PARTS DIAGRAM
SPARE PARTS LIST**





Via Belgio, 22 - 35127 Padova - ITALY
Tel. +39 049 8700307 Fax +39 049 8700605
E-mail: vacuum@lindhaus.it - lindhausrl@pec.it - www.lindhaus.it
Reg.Imp.PD-Cod.Fiscale-P.Iva IT02151740285
REA 211372 - Capitale Sociale €350.000,00 i.v.
Reg.AEE: IT08010000000218 Reg.Pile/Accum.: IT16100P00004235

LSRC00316

PRICE LIST

EFFECTIVE FROM

01/01/2019

DYNAMIC eco FORCE

Pos	Code	Description	Dealer price €	Suggested price €
1	020640000	MICROSWITCH	2,60	5,20
2	011760315	BAG DOOR GASKET	1,05	2,10
3	004493801	BAG DOOR LATCH BLUE	1,05	2,10
4	012370009	BAG DOOR SPRING	0,25	0,50
5	004451201	BAG HOUSING DARK GREY	26,25	52,50
6	085620000	BAG HOUSING GASKET	0,15	0,30
7	004581304	EXHAUST GRILL HOOK	0,85	1,70
8	004571304	BAG SAFETY SUPPORT	1,25	2,50
9	085450081	STRAIN RELIEF KIT 2 PCS.	1,50	3,00
10	022330028	INTERNAL CORD 2 WIRES WITH VACUUM SENSOR	6,45	12,90
10	022320028	INTERNAL CORD 3 WIRES WITH VACUUM SENSOR	6,80	13,60
11	012350009	ANTISTATIC SPRING	1,70	3,40
12	004540104	HOSE SUPPORT	1,70	3,40
13	001880105	CORD HOOK MEDIUM GREY	0,55	1,10
14	004560104	TRANSPORT HANDLE	1,70	3,40
15	004550104	ACCESSORY CLIP	0,65	1,30
16	003360100	EXHAUST GRILL	1,90	3,80
17	085470081	EXHAUST MICROFILTER 10 PCS	8,20	16,40
18	012330316	MOTOR PROTECTION FILTER	0,60	1,20
19	012540016	FOAM FILTER	0,50	1,00
20	010910016	MOTOR FILTER	0,90	1,80
21	004511201	ELECTRIC PANEL HOUSING	7,50	15,00
22	004501201	ELECTRIC PANEL COVER	4,00	8,00
23	022150000	VACUUM SENSOR WITH LIGHT	4,20	8,40
24	004610835	RED LENS	0,55	1,10
25	022140000	MAIN SWITCH	1,90	3,80
26	004601701	SWITCH BUTTON	0,55	1,10
27	012360009	HANDLE SPRING	0,25	0,50
28	004520101	HANDLE BUTTON	1,60	3,20
29	020800000	CIRCUIT BOARD V.100/120	10,95	21,90
29	020820000	CIRCUIT BOARD V.230/240	10,95	21,90
30	004530101	POWER ADJUSTING KNOB	0,40	0,80
31	020040400	TERMINAL BLOCK 2 POLES	0,50	1,00
31	020340400	TERMINAL BLOCK 3 POLES	0,60	1,20
32	000070305	CORD CLAMP	0,20	0,40
33	020200312	CORD.2x1 SCHUKO PLUG	6,65	13,30
33	020780312	CORD.2x1 UK PLUG	8,45	16,90
33	021300312	CORD 2x1 AUSTRALIAN PLUG	8,45	16,90
33	020990312	CORD 2x1 SWISS PLUG	8,45	16,90
33	023340320	CORD 2x1,25 10,7 MT.(JAPAN)	10,80	21,60
33	022480020	CORD 3x18 12,5 MT. USA PLUG YELLOW	14,10	28,20
34	085463881	HANDLE GRIP BLUE	4,60	9,20

35	085520081	CROMATE TUBE + HANDLE BUTTON	4,25	8,50
36	084520081	HANDLE BUTTON ASSEMBLY 2 POS.	0,85	1,70
37	181450381	EXTENSION HOSE WITH HANDLE GRIP FOR DYNAMIC	13,50	27,00
38	032340300	TELESCOPIC WAND for DYNAMIC	4,45	8,90
39	030060310	CREVICE TOOL	0,90	1,80
41	030820300	UPHOLSTERY TOOL	1,25	2,50
42	022800000	CIRCUIT BOARD V.100-120/55-60 W.170	12,85	25,70
42	025450000	CIRCUIT BOARD 230/240V	12,85	25,70
43	051420080	VACUUM MOTOR R26APSS (HE) V.100/55 W.750	41,55	83,10
43	051360080	VACUUM MOTOR R26APSS (HE) V.120/60 W.750	41,00	82,00
43	051370081	VACUUM MOTOR R26APSS (HE) V.240/50 W.750	41,00	82,00
44	005100308	MOTOR GASKET	3,25	6,50
45	086630381	BRUSH HOLDER GASKET WITH MOTOR BUSH	1,70	3,40
47	182730081	PINION + NUT	1,70	3,40
48	013090300	TIMING BELT 249 M7	2,70	5,40
49	012480307	O'RING	0,10	0,20
51	083010000	LENS SET RED/GREEN	1,15	2,30
52	022740028	CORD 2 WIRES	1,80	3,60
52	022660028	CORD 3 WIRES	2,05	4,10
53	030640000	HEPA FILTER (STANDARD)	6,00	12,00
54	004440036	BUSH	1,25	2,50
55	013860029	RIGHT SUPPORT DYNAMIC	2,35	4,70
55	088800081	RIGHT SUPPORT DYNAMIC WITH MICROSWITCH	5,80	11,60
56	004370304	LEFT SUPPORT	1,25	2,50
57	020120000	RFI FILTER V.230	0,25	0,50
58	087064681	BASE HOUSING COVER DYNAMIC 12" WITH LENS	7,25	14,50
58	087074681	BASE HOUSING COVER DYNAMIC 15" WITH LENS	8,55	17,10
58	087084681	BASE HOUSING COVER DYNAMIC 18" WITH LENS	9,95	19,90
59	004410201	CONVOYER TUBE	1,70	3,40
60	086950009	SCREW 2,2x16 (WRAPPING OF 20 PCS)	1,00	2,00
61	013050316	FILTER	0,75	1,50
62	060290081	PULLEY	5,05	10,10
63	010580016	MOTOR FILTER	1,60	3,20
64	009650301	BRUSH ROLLER DYNAMIC 300 (12") BRISTLE 0,25 BLACK + INSERT	6,95	13,90
64	009660301	BRUSH ROLLER DYNAMIC 300(12") BRISTLE 0,30 RED + INSERT	8,10	16,20
64	009670301	BRUSH ROLLER DYNAMIC 380 (15") BRISTLE 0,25 BLACK + INSERT	8,10	16,20
64	009680301	BRUSH ROLLER DYNAMIC 380(15") BRISTLE 0,30 RED + INSERT	9,30	18,60
64	009690301	BRUSH ROLLER DYNAMIC 450 (18") BRISTLE 0,25 BLACK + INSERT	9,30	18,60
64	009700301	BRUSH ROLLER DYNAMIC 450 (18") BRISTLE 0,30 RED + INSERT	10,50	21,00
65	004341305	FOOT PEDAL RED	2,40	4,80
66	014800009	FOOT PEDAL SPRING	0,30	0,60
67	005391233	MOTOR HOUSING DARK GRAY	10,85	21,70
68	086881281	BASE HOUSING 12" DARK GRAY	12,50	25,00
68	086891281	BASE HOUSING 15" DARK GRAY	15,15	30,30
68	086901281	BASE HOUSING 18" DARK GRAY	17,45	34,90
69	086910081	REAR WHEEL ASSEMBLY	3,60	7,20
70	003753804	ADJUSTING KNOB BLUE	1,45	2,90
71	000990305	BRUSH ADJUSTER	1,20	2,40
72	005783804	SIDE COVER BLUE	1,85	3,70
73	085650081	ROLLER SUPPORT	4,25	8,50
74	011360307	O'RING	0,10	0,20
75	081940081	WHEELS SUPPORT	2,75	5,50
76	086071381	WRAPPING OF 20 PCS ROLLER COVER CLIP	2,30	4,60
77	003090004	FRONT WHEEL-NYLON SILVER GREY	0,40	0,80
78	013060029	FRONT AXLE	3,70	7,40
79	005571304	CHANNEL COVER	1,20	2,40
80	005460333	ROLLER COVER 30 (12")	6,45	12,90
80	005470333	ROLLER COVER 38 (15")	7,10	14,20
80	005480333	ROLLER COVER 45 (18")	8,25	16,50
81	004313812	BACK BUMPER 38 (15") BLUE	0,55	1,10
81	005733812	BACK BUMPER 45 (18") BLUE	0,75	1,50

82	004293812	FRONT BUMPER 30 (12") BLUE	2,10	4,20
82	004303812	FRONT BUMPER 38 (15") BLUE	2,25	4,50
82	005743812	FRONT BUMPER 45 (18") BLUE	2,55	5,10
84	085510000	RUBBER TUBE	0,25	0,50
85	004641201	EL.PANEL CAP	0,25	0,50
86	181480081	TRANSMISSION SUPPORT W/ PULLEY	10,00	20,00
87	085440081	COMPLETE GRILL	3,75	7,50
88	085231280	ELECTRIC PANEL CPL.V.100/55	28,80	57,60
88	085221280	ELECTRIC PANEL CPL.V.120/60 3 WIRES	28,80	57,60
88	085161281	ELECTRIC PANEL CPL.V.230/50 SCHUKO PLUG	26,10	52,20
88	085181281	ELECTRIC PANEL CPL.V.240/50 BRITISH PLUG	28,80	57,60
88	085431281	ELECTRIC PANEL CPL.V.240/50 SWISS PLUG	28,80	57,60
88	087941281	ELECTRIC PANEL CPL.V.230/50 AUSTRALIAN PLUG	28,80	57,60
88	085241280	ELECTRIC PANEL CPL.V.100/55 W/ELECTRONIC	38,15	76,30
88	085171281	ELECTRIC PANEL CPL.V.230/50 W/ELECTRONIC SCHUKO PLUG	38,15	76,30
88	085191281	ELECTRIC PANEL CPL.V.240/50 W/ELECTRONIC BRITISH PLUG	38,15	76,30
88	086771281	ELECTRIC PANEL CPL.V.230/50 W/ELECTRONIC SEV PLUG	38,15	76,30
89	085253881	HANDLE TUBE ASSEMBLY BLUE	12,15	24,30
90	085334601	BAG DOOR ASSEMBLY LIGHT GREY (ecoFORCE)	18,90	37,80
91	085530009	SCREW 2,9x19 (WRAPPING OF 20 PCS)	1,15	2,30
92	085540009	SCREW 3,5x9,5 TG (WRAPPING OF 20 PCS)	1,35	2,70
93	085550009	SCREW 3,5x25 (WRAPPING OF 20 PCS)	1,35	2,70
94	085560009	SCREW 3,9x16 (WRAPPING OF 20 PCS)	1,15	2,30
95	085640009	WRAPPING OF 20 PCS SCREW 4,8x13 TG	1,60	3,20
96	085570009	SCREW 3,5x32 (WRAPPING OF 20 PCS)	1,60	3,20
97	085580009	SCREW 3,9x19 (WRAPPING OF 20 PCS)	1,30	2,60
98	085590009	SCREW 3,9x13 (WRAPPING OF 20 PCS)	1,30	2,60
99	051050080	BRUSH MOTOR 100/120V 300-380 (12"-15")	27,00	54,00
99	051060080	BRUSH MOTOR 100/120V 450 (18")	29,90	59,80
99	051090081	BRUSH MOTOR 240V 300-380 (12"-15")	27,00	54,00
99	051100081	BRUSH MOTOR 240V 450 (18")	29,90	59,80
100	086290081	KIT MOTOR GASKET	5,95	11,90
101	085610009	SCREW 2,9x16 (WRAPPING OF 20 PCS)	1,30	2,60
102	005090000	BUSH MOTOR	0,35	0,70
103	022280000	THERMAL PROTECTOR CD2 V.120	2,05	4,10
103	022530000	THERMAL PROTECTOR V.240 ACTIVA ESO	2,05	4,10
103	022540000	THERMAL PROTECTOR V.100 ACTIVA ESO	2,05	4,10
104	012580315	CONVEJOR GASKET	0,20	0,40
105	005791304	CONVEJOR	1,70	3,40
106	005030004	SPACER CORD HOOK	0,65	1,30
107	085600009	SCREW 3,9x25 (WRAPPING OF 20 PCS)	1,60	3,20
108	088620081	DRIVE JOINT BASE	1,45	2,90
109	181490081	TRANSMISSION SUPPORT WITHOUT PULLEY	3,50	7,00
	022300000	CARBON BRUSH R36 (NEW)	2,30	4,60